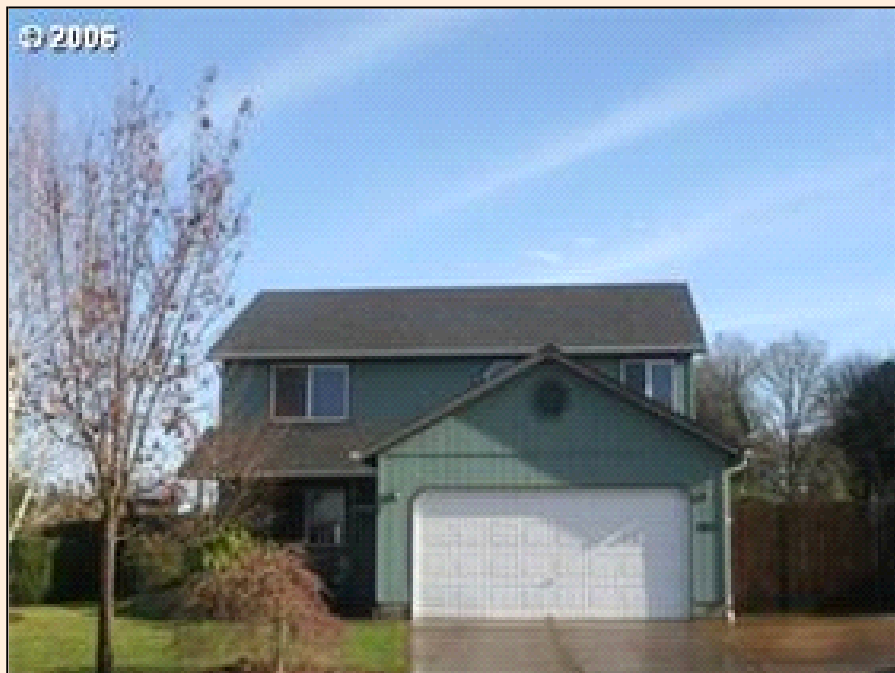


# 901 S 32ND PL Springfield

## PROPERTY DETAILS



**Listing Price:** **\$259,900**

**Listing Address:** 901 S 32ND PL

Springfield OR

**Bedrooms:** 4

**Full Baths:** 2

**Partial Baths:** 1

**QR Code:**

On a SmartPhone?  
Scan the QR code  
to see this listing



## PROPERTY DESCRIPTION

AMAZING VALUE...Best in Town after major price reduction. Wonderful home with excellent views. RV Parking, underground sprinklers, and full power backyard shed. Light filled and spacious with custom cabinets. Quiet neighborhood. VERY CLEAN, WELL KEPT HOME.

## CONTACT INFORMATION



**A.D. Smith**  
**Keller Williams Realty**  
**adsmithteam.com**  
2644 Suzanne Way  
Eugene OR 97408  
541-653-7407  
541-302-7666  
adsmith@kw.com





**Equal Housing Opportunity**

Property information deemed reliable but not guaranteed and should be verified.

---

Copyright © 2003-2012 Real Pro Systems LLC. All rights reserved.